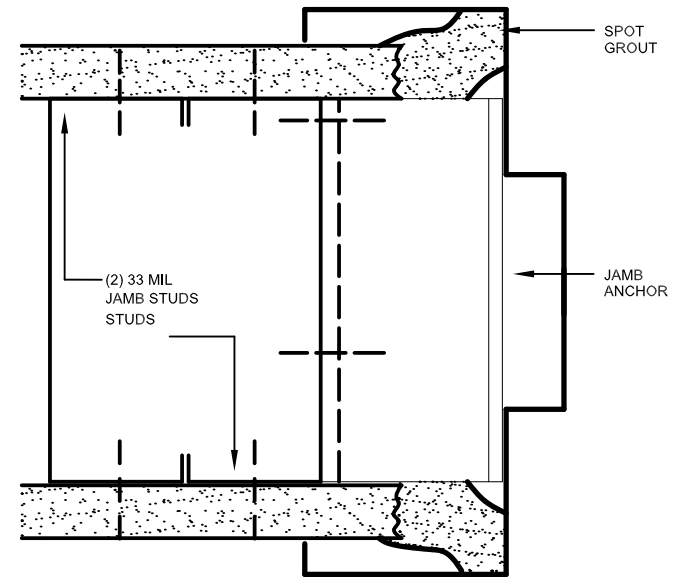


ELEVATION



JAMB SECTION A-A

GENERAL NOTES:

1. Recommendations per **USG Construction Handbook**.
2. For doors up to 4'-0" wide and weighing 300 lbs. or less - (2) 33 mil studs and track.
3. Detail intended for nonstructural applications.
4. Stud depth, spacing and thickness based on height of wall and design load. Consult **SFIA Technical Guide for Cold-Formed Steel Framing Products** for limiting heights.
5. Gypsum panel type and thickness as required to meet design considerations.
6. Check with USG for clarification on spot-grouting and its potential requirement.

DISCLAIMER: This detail must not be used without a complete evaluation by the owner's design professional to verify validity of the design.